

PC Web Viewer

User Manual

1. Introduction

1.1 Introduction

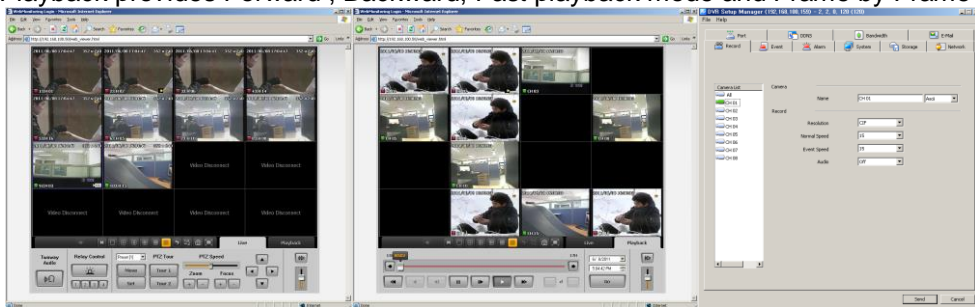
The PC Web Viewer Software (S/W) is used to manage the DVR through network (Internet).

1.2 Features

The S/W manages one DVR at a time and supports up to 16Ch live monitoring. Supported functions are

- 2 way Audio
- Relay control
- PTZ control
- Preset configuration and movement.
- Focus control of camera.
- DVR configuration
- Remote Playback

Remote Playback provides Forward , Backward, Fast playback mode and Frame by Frame mode.



(LIVE)

(PLAYBACK)

(Remote Configuration)

2. Installation

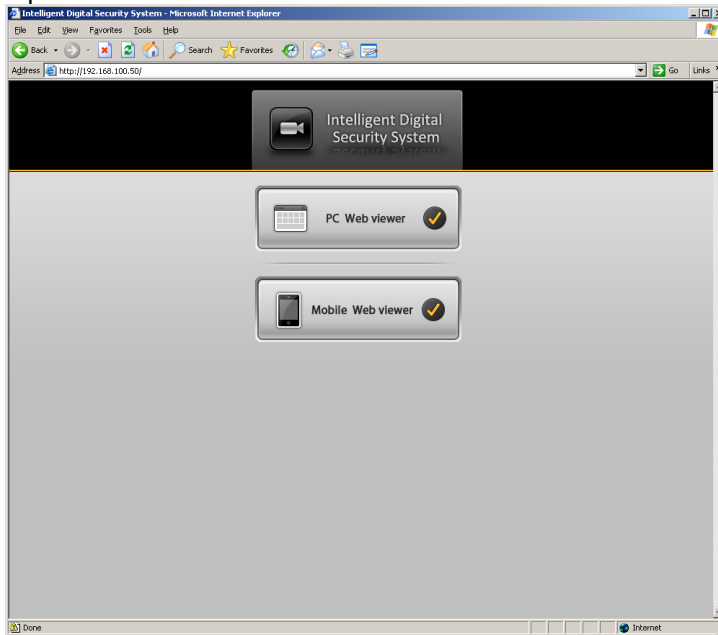
2.1 System Requirement

Below is the minimum requirement of PC

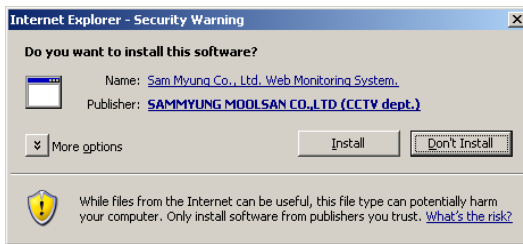
System	Minimum requirement
CPU	Intel Core2Duo 2.0GHz or higher
Memory	2GB or higher
VGA memory	128MB or higher
VGA display	1024 * 768 (With 32bit color) or higher
HDD	80GB or higher
OS	Windows XP SP2 or higher
others	Direct X 9.0 or higher IE8.0 or higher

2.2 Installation Steps

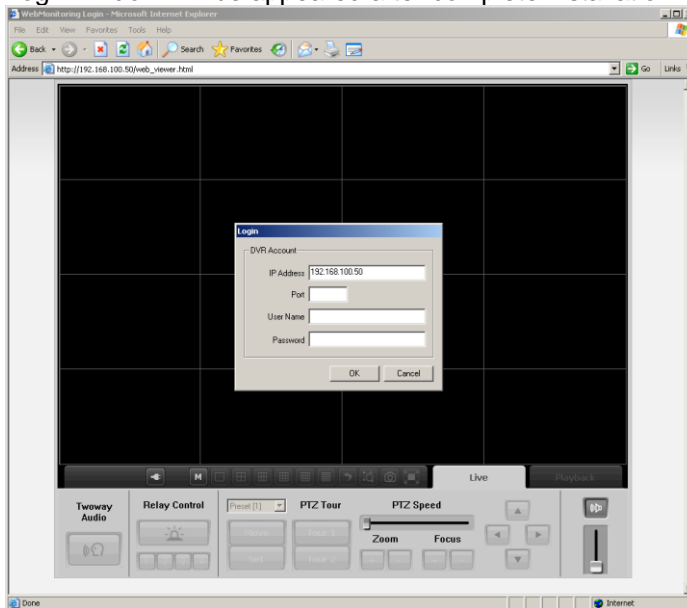
1. Open Internet Explorer.
2. Input DVR IP address.



3. Allow to Install ActiveX for web viewer.
4. Press 'Next' button to complete copy and install the SW.



5. Log In widow will be appeared after complete installation.



3. Live View

3.1 Live View window.

Live View window will be available after a connection is made. Users can view 'live video and audio' in this display.

3.2 View Live image

Users can change the Viewing Mode (1,4,6,9,12,16 view), camera position and Live Zoom.

3.2.1 Live View mode

1. Select one of view mode from 

3.2.2 Change of position of channel.

1. 'Click & Drag' on the wanted channel using the mouse.
2. Move the mouse cursor to wanted position in display and 'Drop'.
3. Please take note that the channels will be switched.

3.2.3 Live zoom

1. User can use digital zoom at selected camera on Full screen mode.
2. The 'Zoom In' ratio can be select from 100% to 1600%.

3.3 Functions on live view

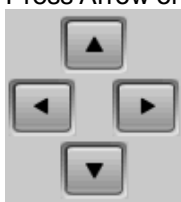
Live View supports PTZ control, Relay control and 2 Way Audio

3.3.1 PTZ Control

PTZ control will be available when the connected camera support Pan, Tilt and zoom function. And also control focus, Preset, Speed of movement and Tour function.

PTZ Control

1. Select a channel that connected PTZ camera.
2. Press Arrow on screen to control movement of camera



PTZ Focus Control

1. Select a channel that wants to control Focus.



2. Press  button and set proper focus.

PTZ Zoom Control



1. Select a channel that wants to control Zoom.



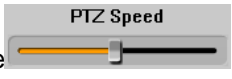
2. Press  button.

Preset Control

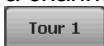

1. Select a channel that wants to control Preset.

2. Select a preset button and press  button.
3. Camera will be reposition.
4. Move a camera position by PTZ control button and Press  button to same new preset position.

PTZ Speed control




1. Select a channel that wants to control Speed.
2. Move  a slide bar at proper position during checking the speed of PTZ movements.

PTZ Tour Control

1. Select a channel that wants to active tour function.
2. Press  button to run saved route of PTZ movement
3. Press  button to run saved route of PTZ movement

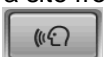
3.3.2 Relay Out Control

Users can control the relay out that connected to DVR. User can do activate and deactivate of Relay device remotely.

1. Select a site from the device list.
2. Press  buttons to set action as On/Off.
3. Display as  (Off) /  (On).
4. Time out of relay control set as 5 sec. so next command will be activated after 5 sec.

3.3.3 2 Way Audio Control

Audio from Remote PC's mic will be transferred to DVR's Speaker.


1. Select a site from the device list
2. Press  buttons and start to speak through mic of PC.
3. DVR side can hear a voice from Speaker.
4. 2way Audio button's time out set as 120 sec, so next command for 2way audio can be controlled after 120 seconds.

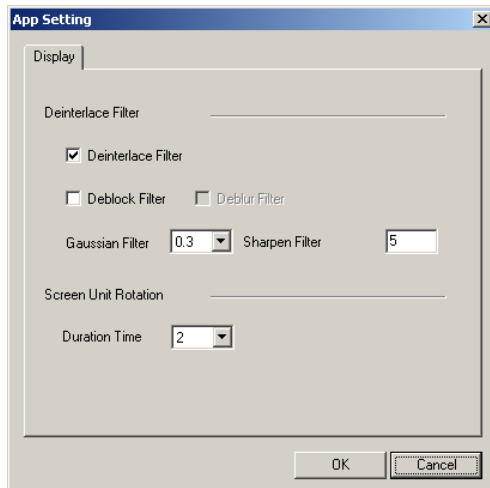
3.4 Basic functions

Users can App setting, Color setting, Sequence screen, Live Image Capture and Full Screen.

3.4.1 App setting

Users can Configure SW.


1. Press  button and select [App setting] item.

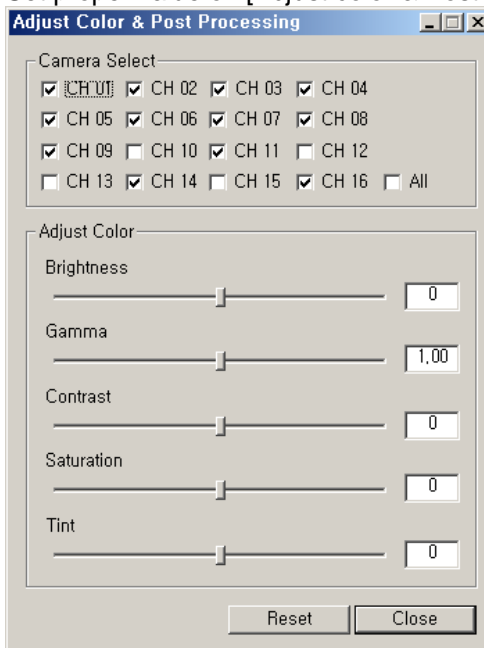


2. Users can apply several Filter mode for image.
3. Users can set the duration of image change during sequence mode.

3.4.2 Color setting

Users allow adjusting the live channels color.


1. Press  button and select [Color Adjust]
2. Set proper value on [Adjust color & Post processing] window.



3. User can adjust Brightness, Gamma, Contrast, Saturation and tint.
4. With [All] option, user can apply same adjustment to all camera at the same time.
5. The color adjustment will not be saved. Next login will contain default value.


3.4.3 Screen Sequence

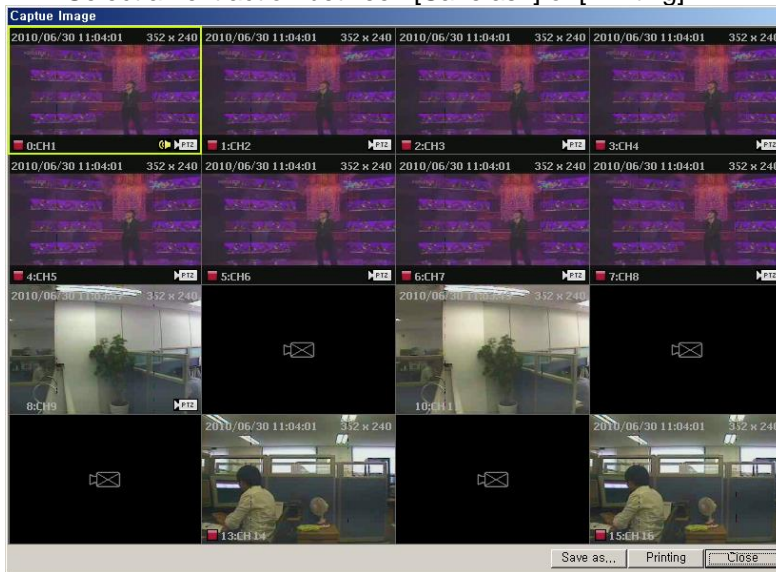
The screen can be changed as sequence with term.

1. Select a channel mode (1,4,9,16 mode).
2. Set a duration time for sequence on [App setting] menu(2 ~ 60 seconds).
3. Press  button to start sequence mode.

3.4.4 Live image capture

Users allow capturing live images and printing out selected images.

1. Press  button to capture screen.
2. Select a next action between [Save as..] or [Printing]

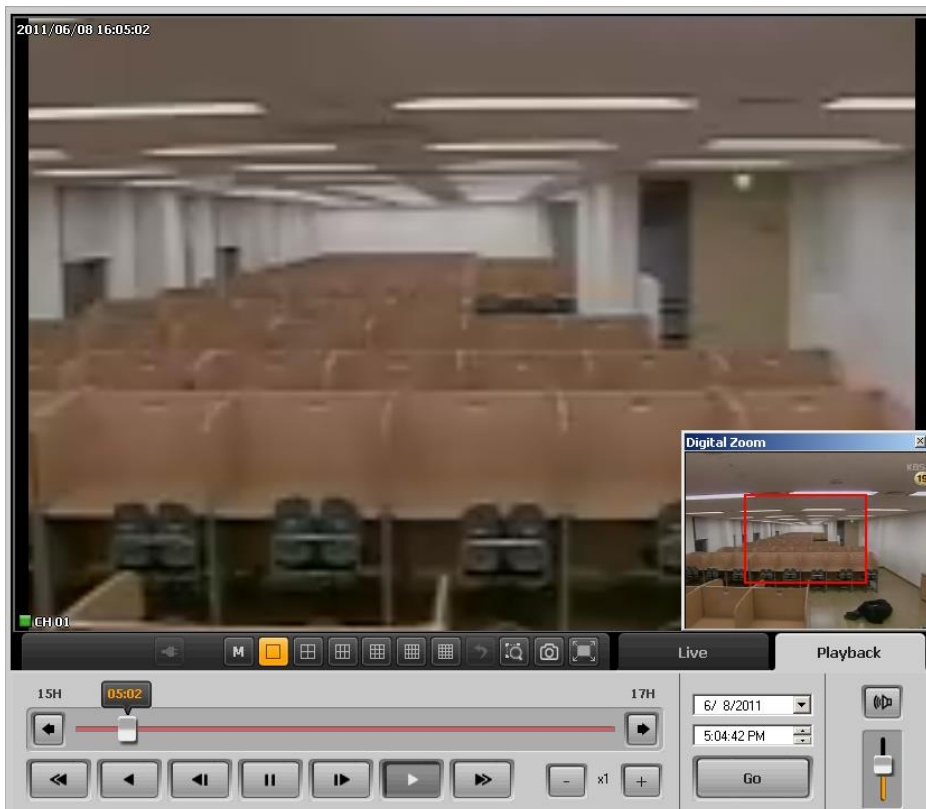


3. The image will be save as Jpeg format file.

3.4.5 Digital Zoom

User can zoom in the selected channel.

1. Select one of the channel then press  button.
2. Move the Red color rectangle to proper position then scroll up the mouse wheel.
3. The maximum zoom ratio is 1600 %




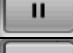
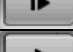



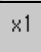




4. Playback

4.1 Remote playback

The network player supports to retrieve a recorded data from DVR on remote PC.

4.1.1 Control panel for playback.

Buttons	Description
	Fast backward playback
	Backward playback
	Previous frame
	Pause
	Next Frame
	Forward playback
	Fast forward playback.
	Move to previous time line
	Move to next time line
	Speed control for playback
	Audio control box

4.1.2 Play from recording file

1. Select Playback tab on SW.
2. Input the start time for playback.


3. Control the playback through  buttons.

4. User can move next / Previous hours by  buttons.




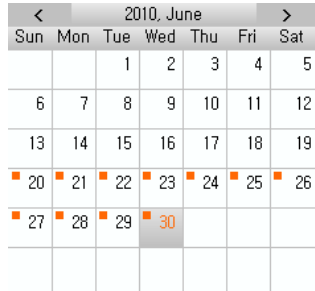
- The Backward playback is available only at 1ch full screen mode with 1 frame per each second.
- Maximum 16Channel can be playback at the same time.

4.1.3 'Go to' function

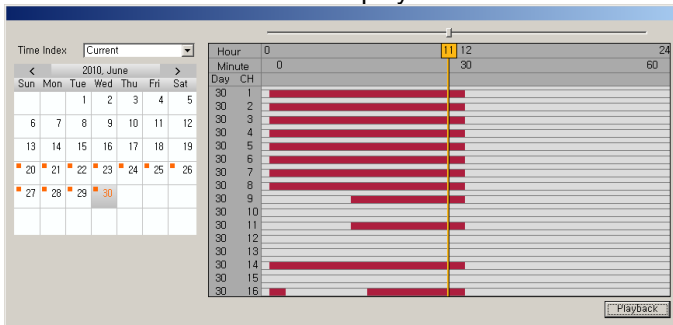
1. Select a date and time.
2. Press  button to playback directly from the selected start time point.

4.1.4 Searching recording data

1. Press  button on playback screen.
2. Select Search item on menu.
3. The calendar will be indicated different color when they have recording data.



4. Select a day from a calendar.
5. Recording data table will be display on right side.
6. Select a time line that want to playback.




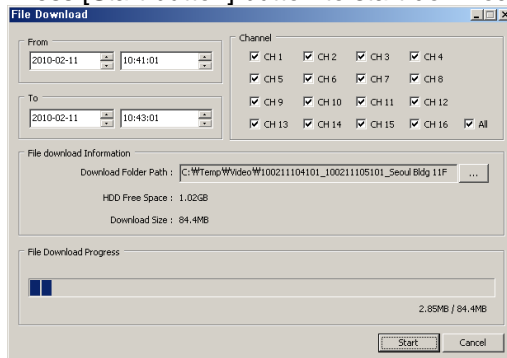
7. To select a minute based time line. Press playback button one more.

4.2 Backup

Recording image and audio from the DVR can be saved at remote PC.

4.2.1 Remote backup

1. Press  button then select [Download] item on menu.
2. Select start / end date and time.
3. Select channels for backup
4. Set a path for backup on PC.
5. Press [Start button] button to start download data from DVR.




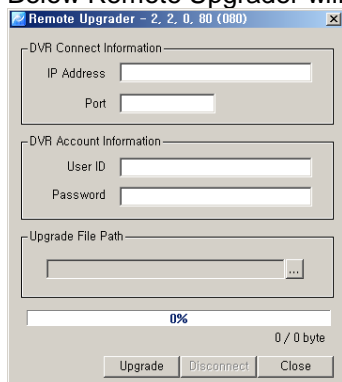
5. Remote Upgrade

5.1 Remote Upgrade

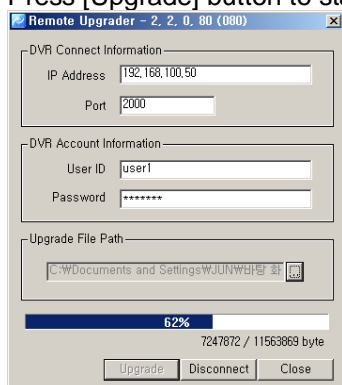
This SW will provide a function to upgrade the DVR with latest FW remotely.

5.2 Start Remote Upgrade

1. Press  button and select [Remote Upgrade] item on menu.
2. Below Remote Upgrader will be appeared.



3. Input DVR's information that needs to be upgraded. (IP address, Port, User ID, Password)
4. Select a upgrade file (*.bin).
5. Press [Upgrade] button to start upgrade procedure.



6. After complete uploading the FW to DVR. DVR will start upgrade the system automatically.

*DVR must be installed HDD before remote upgrading.


6. DVR setup Manager

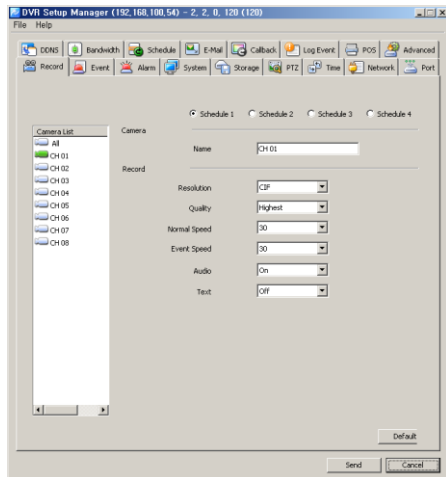
6.1 DVR Setup Manager

DVR setup manager help to configure DVR's setup from remote site.

The configuration file can be saved on PC and also can be applied to other devices also.

6.2 Start DVR Setup manager

1. Press  button then select [DVR setup] item.
2. Setup manager will be executed.
3. User can configure DVR's setup through this manager SW.
4. Press [Send] after complete configure to apply all modified configurations to DVR.



6.3 Save & Load Configuration file

1. Select [Open] on file menu.
2. Select a saved configuration file.
3. Modify any values then saved the file as [save] or [save as].
4. Press [Send] to apply modified values to DVR.

6.4 Configuration initialize /Factory default

1. Select [Setup Data Reset] from file menu.
2. All values will be initialized on configuration file.
3. Select [DVR All reset] from file menu to set factory default the DVR set.
4. Press [Send] buttons to apply the modification onto DVR.

*DVR All Reset will reset all Configuration of DVR, include IP address also.